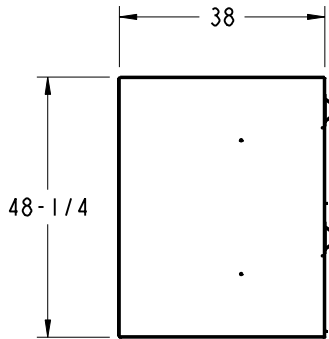


HAUL-ALL EQUIPMENT LTD.		NO.	REVISION	DCO NO DATE
PART NUMBER	FS2-H	DRAWN BY PS-PS	1	RELEASED TO PRODUCTION.
				PS 31 AUG 2017
NAME	LARGE (2) DOOR FOOD STORAGE LKR		2	X X X
MATERIAL	AS SHOWN	SCALE 1/32	3	X X X
		FINISH NONE		X X

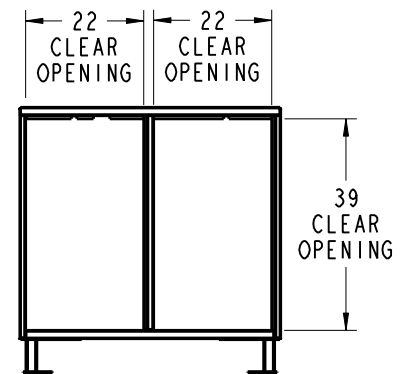
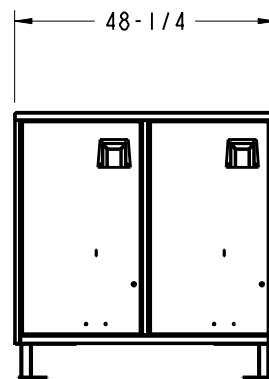
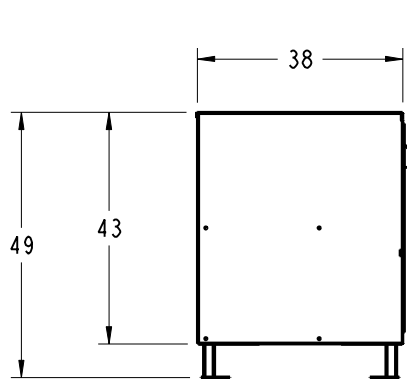
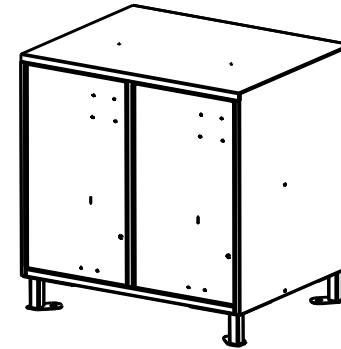
- ALL DIMENSIONS TO BE IN INCHES UNLESS OTHERWISE NOTED.
- ALL DIMENSIONS TO BE  $\pm 1/32$ " UNLESS OTHERWISE NOTED.
- ANGULAR TOLERANCES: FORMED:  $\pm 1^\circ$  ; MACHINED  $\pm 0.5^\circ$

WEIGHT 329 LBS

\*\*\*THIS DRAWING IS CONCEPTUAL ONLY\*\*\*



NOTES: EACH COMPARTMENT HAS AN INSIDE VOLUME OF 20 CU/FT

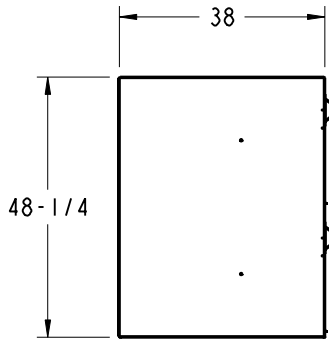


HAUL-ALL EQUIPMENT LTD.		NO.	REVISION	DCO NO DATE
PART NUMBER	FS4	DRAWN BY PS-PS	1	RELEASED TO PRODUCTION.
				PS 31 AUG 2017
NAME	LARGE (4) DOOR FOOD STORAGE LKR		2	X X X
MATERIAL	AS SHOWN	SCALE FINISH	1/32 NONE	3
				X X X

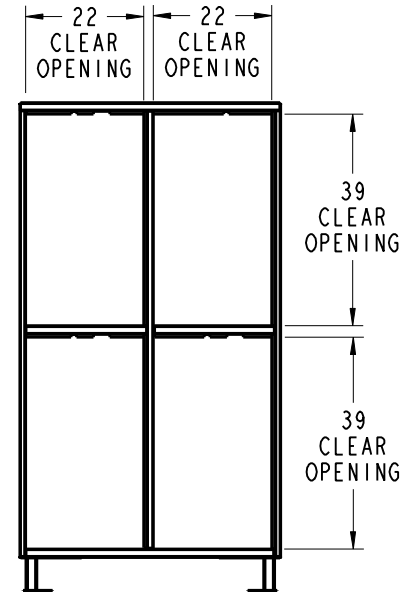
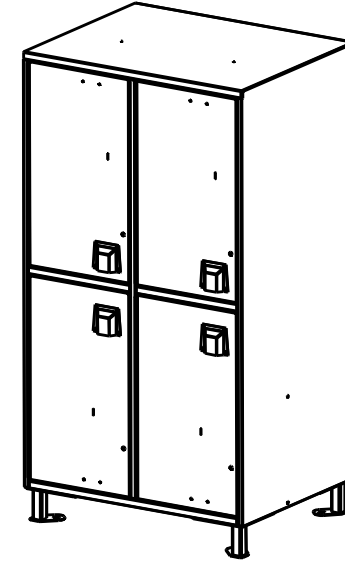
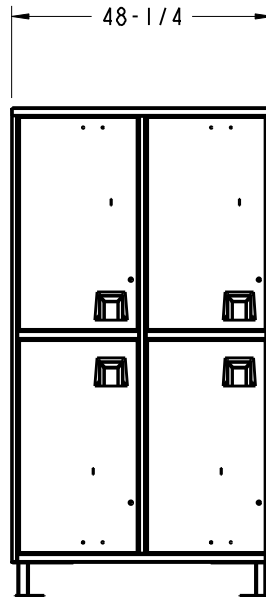
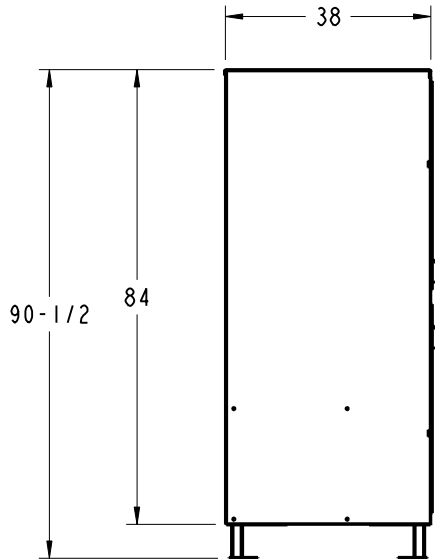
WEIGHT 589 LBS

- ALL DIMENSIONS TO BE IN INCHES UNLESS OTHERWISE NOTED.
- ALL DIMENSIONS TO BE  $\pm 1/32"$  UNLESS OTHERWISE NOTED.
- ANGULAR TOLERANCES: FORMED:  $\pm 1^\circ$  ; MACHINED  $\pm 0.5^\circ$

\*\*\*THIS DRAWING IS CONCEPTUAL ONLY\*\*\*



NOTES: EACH COMPARTMENT HAS AN INSIDE VOLUME OF 20 CU/FT

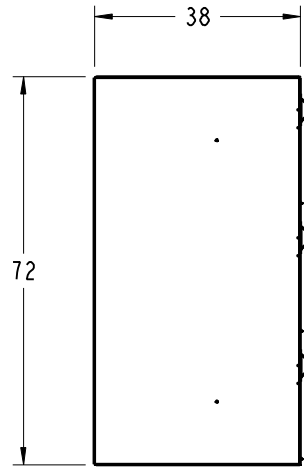
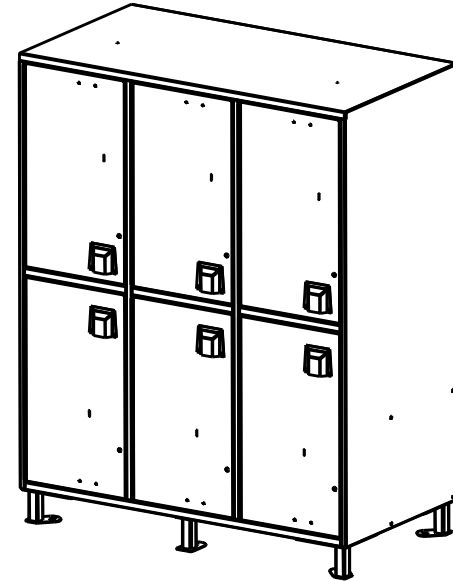


HAUL-ALL EQUIPMENT LTD.		NO.	REVISION	DCO NO DATE
PART NUMBER	FS6-L	1	RELEASED TO PRODUCTION.	PS 31 AUG 2017
NAME	LARGE (6) DOOR FOOD STORAGE LKR	2	X X X	X X
MATERIAL	AS SHOWN	3	X X X	X X
			SCALE 1/32	
			FINISH NONE	

WEIGHT 842 LBS

- ALL DIMENSIONS TO BE IN INCHES UNLESS OTHERWISE NOTED.
- ALL DIMENSIONS TO BE  $\pm 1/32"$  UNLESS OTHERWISE NOTED.
- ANGULAR TOLERANCES: FORMED:  $\pm 1^\circ$  ; MACHINED  $\pm 0.5^\circ$

\*\*\*THIS DRAWING IS CONCEPTUAL ONLY\*\*\*



NOTES: EACH COMPARTMENT HAS AN INSIDE VOLUME OF 20 CU/FT

