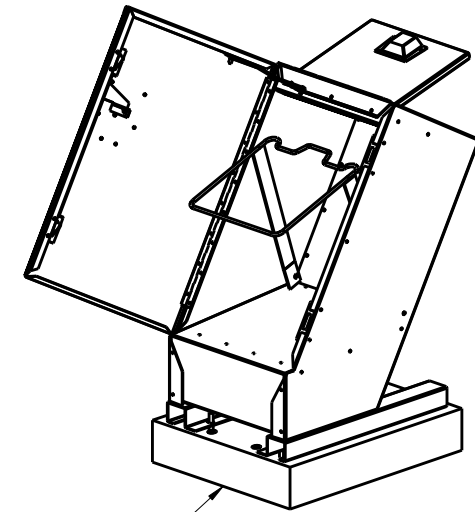
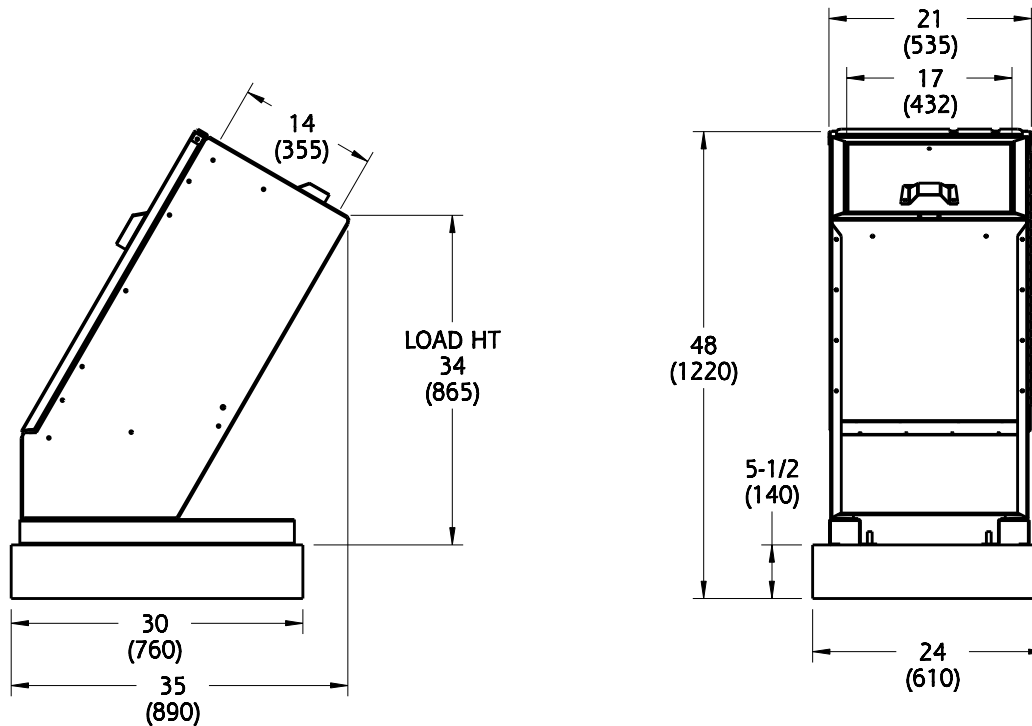
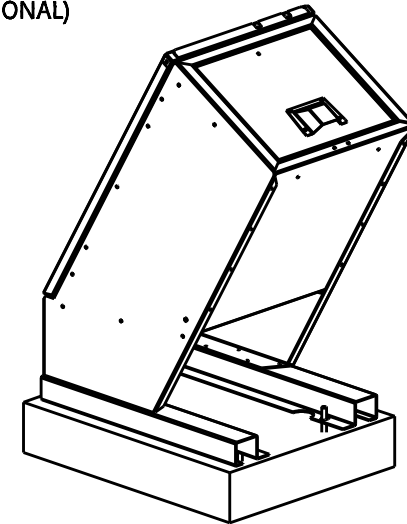


FEATURE	DESCRIPTION	SPECIFICATION
Capacity	Tilt Out Bag Cage	4-1/2 cu.ft. 32 US Gallons (120L)
	Poly Bag	2.5 mil 30 x 38 (760 x 965)
Construction	Housing	12 Ga. (2.6) Galvanneal Steel
	Lid	14 Ga. (1.9) Galvanneal Steel
	User Door	14 Ga. (1.9) Galvanneal Steel
	Side Hinged Unloading Door	14 Ga. (1.9) Galvanneal Steel
	Hinges and Latches	Stainless Steel
	Paint	Powder Coat
Weights	Standard Mini Hid-A-Bag I	160lbs (73kg)
	(Optional) Pre-Cast Mounting Pad (HBG-3709)	300lbs (136kg) 24 x 30 x 5.5 (610 x 760 x 140)

ALL SPECIFICATIONS SUBJECT TO CHANGE WITHOUT NOTICE



MOUNTING PAD  
(OPTIONAL)



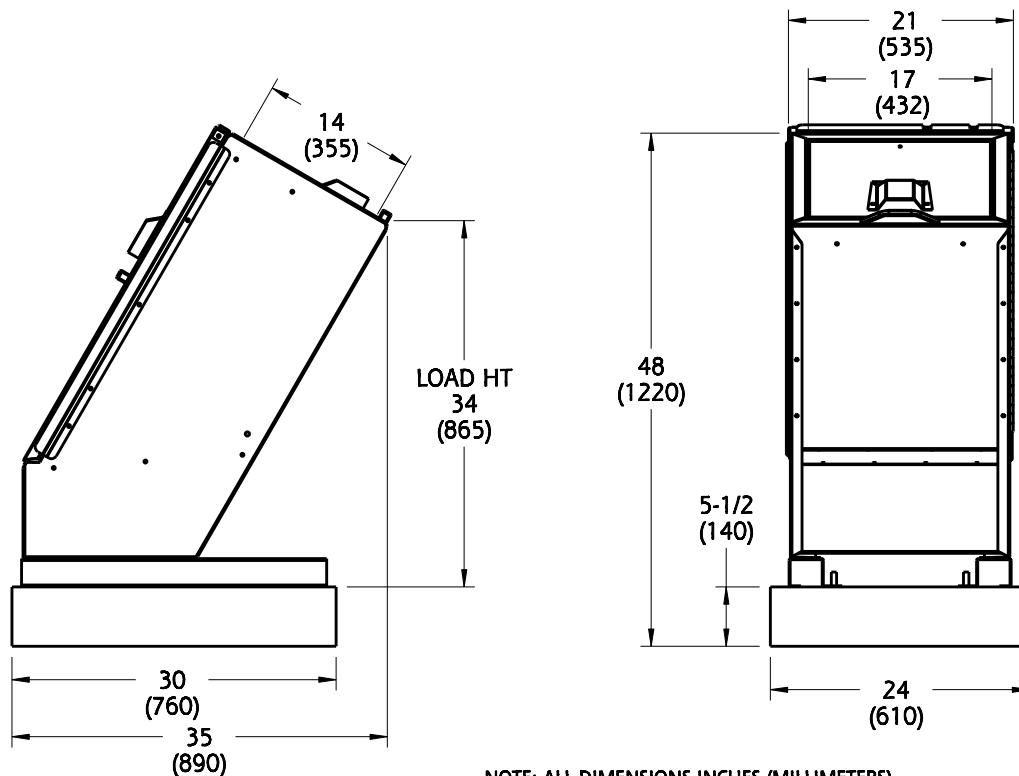
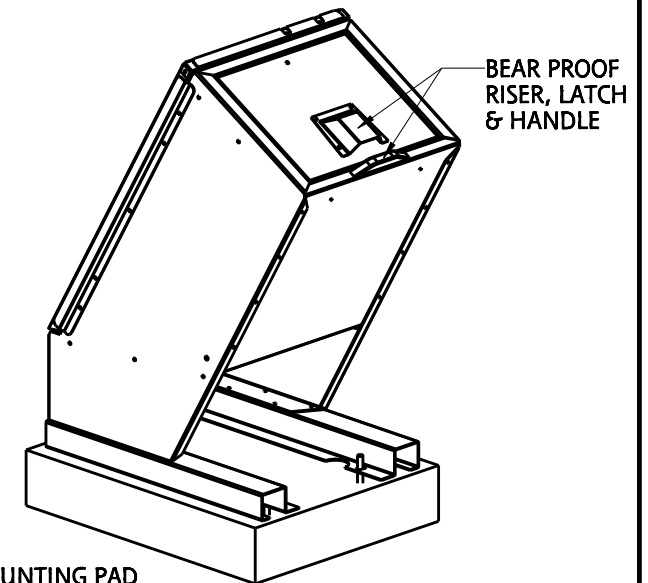
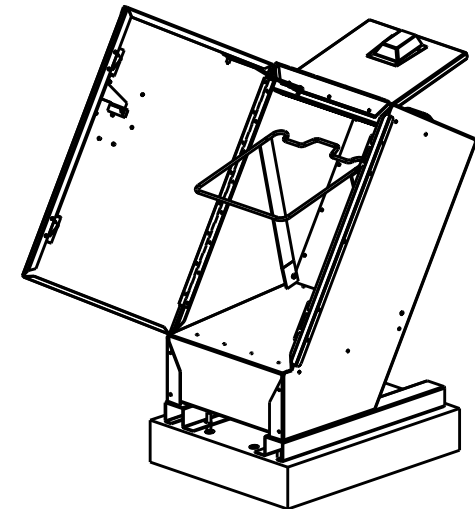
NOTE: ALL DIMENSIONS INCHES (MILLIMETERS)

TRAILER SIZE	QTY	HAUL-ALL EQUIPMENT LTD. reserves proprietary rights on this drawing or any part of the information contained thereon. This drawing shall be considered confidential material and is not to be used for competitive bidding nor for use in any procurements other than from Haul-All Equipment Ltd.	NAME HBIM CONTAINER (STANDARD)	
8-1/2ft x 45ft	72		PART NUMBER SP-HBIM-N	DRAWN BY PS
8-1/2ft x 53ft	84		DATE AUGUST 22, 2016	REVISION 1
B-Train 8-1/2ft x 28ft & 32ft	92			
Double Decker Van 8-1/2ft x 48ft	152			




FEATURE	DESCRIPTION	SPECIFICATION
Capacity	Tilt Out Bag Cage	4-1/2 cu.ft. 32 US Gallons (120L)
	Poly Bag	2.5 mil 30 x 38 (760 x 965)
Construction	Housing	12 Ga. (2.6) Galvanneal Steel
	Lid	14 Ga. (1.9) Galvanneal Steel
	User Door	14 Ga. (1.9) Galvanneal Steel
	Side Hinged Unloading Door	14 Ga. (1.9) Galvanneal Steel
	Hinges and Latches	Stainless Steel
	Paint	Powder Coat
Weights	Standard Mini Hid-A-Bag I	160lbs (73kg)
	(Optional) Pre-Cast Mounting Pad (HBG-3709)	300lbs (136kg) 24 x 30 x 5.5 (610 x 760 x 140)

ALL SPECIFICATIONS SUBJECT TO CHANGE WITHOUT NOTICE

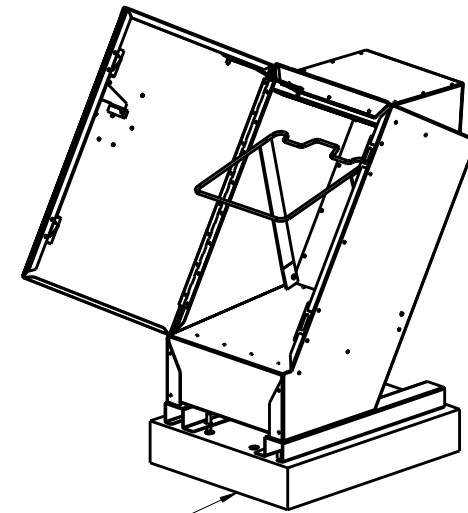


NOTE: ALL DIMENSIONS INCHES (MILLIMETERS)

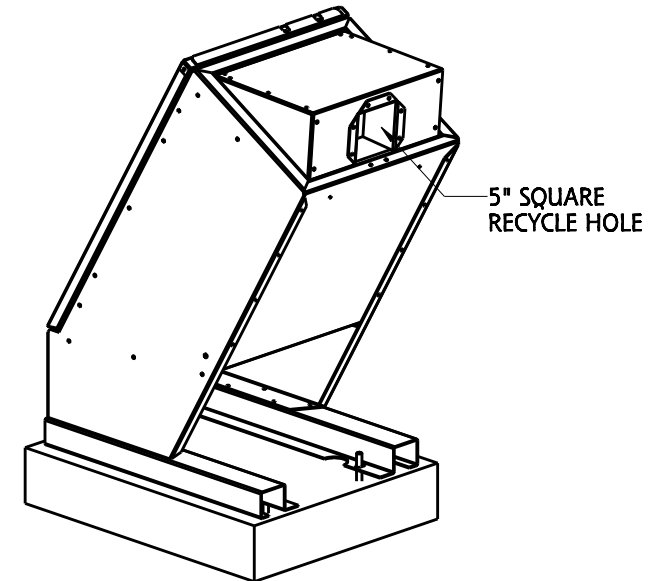
TRAILER SIZE	QTY	<p>HAUL-ALL EQUIPMENT LTD. reserves proprietary rights on this drawing or any part of the information contained thereon. This drawing shall be considered confidential material and is not to be used for competitive bidding nor for use in any procurements other than from Haul-All Equipment Ltd.</p> 	NAME HBIM BEAR PROOF CONTAINER	
8-1/2ft x 45ft	72		PART NUMBER SP-HBIM-P	DRAWN BY PS
8-1/2ft x 53ft	84		DATE AUGUST 22, 2016	REVISION 1
B-Train 8-1/2ft x 28ft & 32ft	92			
Double Decker Van 8-1/2ft x 48ft	152			

FEATURE	DESCRIPTION	SPECIFICATION
Capacity	Tilt Out Bag Cage	4-1/2 cu.ft. 32 US Gallons (120L)
	Poly Bag	2.5 mil 30 x 38 (760 x 965)
Construction	Housing	12 Ga. (2.6) Galvanneal Steel
	Lid	14 Ga. (1.9) Galvanneal Steel
	User Door	14 Ga. (1.9) Galvanneal Steel
	Side Hinged Unloading Door	14 Ga. (1.9) Galvanneal Steel
	Hinges and Latches	Stainless Steel
	Paint	Powder Coat
Weights	Standard Mini Hid-A-Bag I	160lbs (73kg)
	(Optional) Pre-Cast Mounting Pad (HBG-3709)	300lbs (136kg) 24 x 30 x 5.5 (610 x 760 x 140)

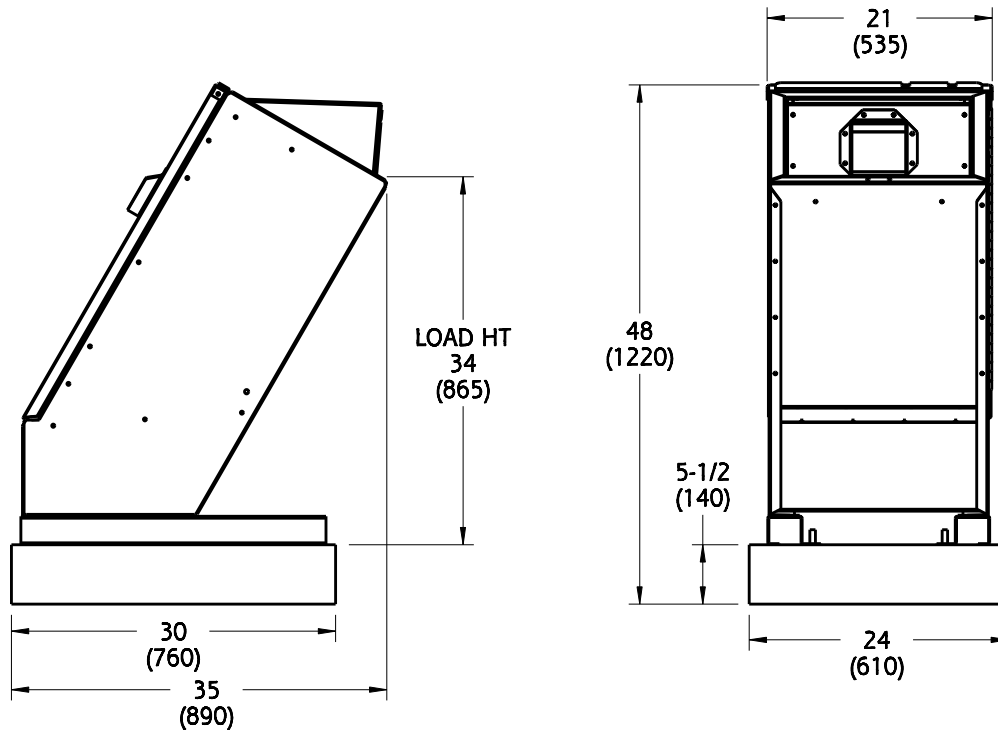
ALL SPECIFICATIONS SUBJECT TO CHANGE WITHOUT NOTICE



MOUNTING PAD (OPTIONAL)



5" SQUARE RECYCLE HOLE



NOTE: ALL DIMENSIONS INCHES (MILLIMETERS)

TRAILER SIZE	QTY
8-1/2ft x 45ft	72
8-1/2ft x 53ft	84
B-Train 8-1/2ft x 28ft & 32ft	92
Double Decker Van 8-1/2ft x 48ft	152

HAUL-ALL EQUIPMENT LTD. reserves proprietary rights on this drawing or any part of the information contained thereon. This drawing shall be considered confidential material and is not to be used for competitive bidding nor for use in any procurements other than from Haul-All Equipment Ltd.



NAME <b>HBIM SQ. RECYCLE CONTAINER</b>	
PART NUMBER <b>SP-HBIM-Y</b>	DRAWN BY <b>PS</b>
DATE <b>AUGUST 22, 2016</b>	REVISION <b>1</b>